

WIRELESS FUND

Semi-Annual Report

September 30, 2018

Average annual total returns for the periods ended 9/30/18 (Unaudited)

9/30/18 NAV \$12.04

	<u>1 Year*</u>	<u>3 Year*</u>	<u>5 Year*</u>	<u>10 Year*</u>
Wireless Fund	17.58%	17.56%	14.22%	10.55%
NASDAQ**	25.17%	21.70%	17.72%	15.72%
Standard & Poor's 500® Index***	17.91%	17.31%	13.95%	11.97%

Total Annual Fund Operating Expense Ratio (from 07/27/18 Prospectus): 1.96%

The Total Annual Operating Expense Ratio reported above will not correlate to the expense ratio in the Fund's financial highlights because the financial highlights include only the direct operating expenses incurred by the Fund, not the indirect costs of investing in acquired funds.

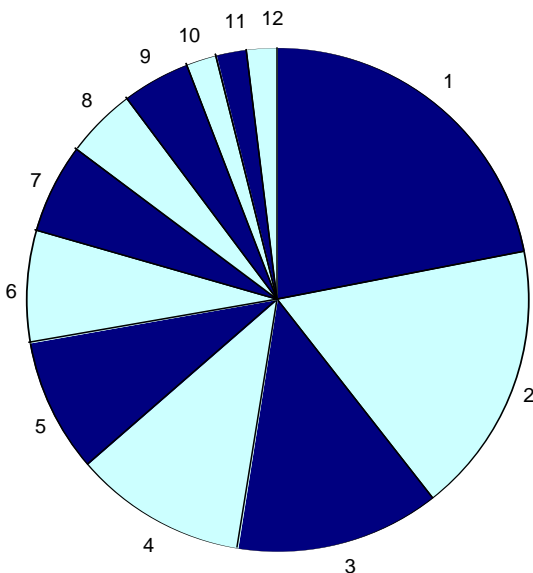
*1 Year, 3 Year, 5 Year and 10 Year returns include change in share prices and in each case includes reinvestment of any dividends and capital gain distributions. The returns shown do not reflect the deduction of taxes that a shareholder would pay on Fund distributions or the redemption of Fund shares.

**The NASDAQ Composite (NASDAQ) is a capitalization-weighted index of all common stocks listed on NASDAQ and is an unmanaged group of stocks whose composition is different from the Fund.

***The Standard & Poor's 500® Index (S&P 500) is a broad market-weighted average dominated by blue-chip stocks and is an unmanaged group of stocks whose composition is different from the Fund.

PAST PERFORMANCE DOES NOT GUARANTEE FUTURE RESULTS. INVESTMENT RETURN AND PRINCIPAL VALUE WILL FLUCTUATE SO THAT SHARES, WHEN REDEEMED, MAY BE WORTH MORE OR LESS THAN THEIR ORIGINAL COST. RETURNS DO NOT REFLECT THE DEDUCTION OF TAXES THAT A SHAREHOLDER WOULD PAY ON FUND DISTRIBUTIONS OR THE REDEMPTION OF FUND SHARES. CURRENT PERFORMANCE MAY BE LOWER OR HIGHER THAN THE PERFORMANCE DATA QUOTED. TO OBTAIN PERFORMANCE DATA CURRENT TO THE MOST RECENT MONTH END, PLEASE CALL 1-800-590-0898. AN INVESTMENT IN THE FUND IS SUBJECT TO INVESTMENT RISKS, INCLUDING THE POSSIBLE LOSS OF THE PRINCIPAL AMOUNT INVESTED. THE FUND'S DISTRIBUTOR IS RAFFERTY CAPITAL MARKETS, LLC.

Wireless Fund Sector Distribution (Unaudited)
 (As a Percentage of Net Assets)



Industry Sector

Percentage of Net Assets

1. Services - Computer Programming, Data Processing, Etc.	21.88%
2. Services - Prepackaged Software	17.49%
3. Semiconductors and Related Devices	12.83%
4. Electronic Computers	11.12%
5. Services - Business Services, NEC	8.54%
6. Real Estate Investment Trusts	7.52%
7. Telephone Communications (No Radio Telephone)	5.84%
8. Computer Communications Equipment	4.68%
9. Radio & TV Broadcasting & Communications Equipment	4.27%
10. Communications Services	2.34%
11. Retail - Catalog & Mail-Order Houses	1.79%
12. Cash Equivalents Less Liabilities In Excess of Other Assets	1.70%

PROXY VOTING GUIDELINES
 (Unaudited)

Value Trend Capital Management, LP, the Fund's Adviser, is responsible for exercising the voting rights associated with the securities held by the Fund. A description of the policies and procedures used by the Adviser in fulfilling this responsibility is available without charge on the Fund's website at www.wireless-fund.com. It is also included in the Fund's Statement of Additional Information, which is available on the Securities and Exchange Commission's website at <http://www.sec.gov>.

Information regarding how the Fund voted proxies, Form N-PX, relating to portfolio securities during the most recent 12-month period ended June 30 is available without charge, upon request, by calling our toll free number (1-800-590-0898). This information is also available on the Securities and Exchange Commission's website at <http://www.sec.gov>.

Availability of Quarterly Schedule of Investments (Unaudited)

The Fund files its complete schedule of portfolio holdings with the Securities and Exchange Commission (“SEC”) for the first and third quarters of each fiscal year on Form N-Q. The Fund’s Forms N-Q are available on the SEC’s website at <http://www.sec.gov>. The Fund’s Forms N-Q may also be reviewed and copied at the SEC’s Public Reference Room in Washington, DC. Information on the operation of the Public Reference Room may be obtained by calling 1-800-SEC-0330.

Disclosure of Expenses (Unaudited)

Shareholders of this Fund incur ongoing costs, consisting of management fees and other Fund expenses. The following example is intended to help you understand your ongoing costs of investing in the Fund and to compare these costs with similar costs of investing in other mutual funds. If shares are redeemed within 90 days of purchase from the Fund, the shares are subject to a 2% redemption fee. Additionally, IRA accounts will be charged an \$8.00 annual maintenance fee. The example is based on an investment of \$1,000 invested at the beginning of the period and held for the entire period from April 1, 2018 to September 30, 2018.

The first line of the table below provides information about actual account values and actual expenses. In order to estimate the expenses a shareholder paid during the period covered by this report, shareholders can divide their account value by \$1,000 (for example, an \$8,600 account value divided by \$1,000 = 8.6) and then multiply the result by the number in the first line under the heading entitled “Expenses Paid During the Period.”

The second line of the table below provides information about hypothetical account values and hypothetical expenses based on the Fund’s actual expense ratio and an assumed rate of return of 5% per year before expenses, which is not the Fund’s actual return. The hypothetical account values and expenses may not be used to estimate the actual ending account balance or expenses paid by a shareholder for the period. You may use this information to compare the ongoing costs of investing in the Fund and other funds. To do so, compare the 5% hypothetical example with the 5% hypothetical examples that appear in other funds’ shareholder reports.

Please note that the expenses shown in the table are meant to highlight your ongoing costs only and do not reflect any transactional costs, such as redemption fees or IRA maintenance fees described above and expenses of the underlying funds. Therefore, the second line of the table is useful in comparing ongoing costs only, and will not help you determine the relative cost of owning different funds. In addition, if these transactional costs were included, your cost could have been higher.

	Beginning Account Value <u>April 1, 2018</u>	Ending Account Value <u>September 30, 2018</u>	Expenses Paid During the Period* <u>April 1, 2018 to September 30, 2018</u>
Actual	\$1,000	\$1,125.23	\$10.39
Hypothetical (5% annual return before expenses)	\$1,000	\$1,015.29	\$9.85

* Expenses are equal to the Fund’s annualized expense ratio of 1.95%, multiplied by the average account value over the period, multiplied by 183/365 (to reflect the one-half year period).

SCHEDULE OF INVESTMENTS - WIRELESS FUND
SEPTEMBER 30, 2018
(UNAUDITED)

Shares	Fair Value	% of Net Assets
COMMON STOCKS		
Communications Services		
650 SBA Communications Corp. - Class A *	\$ 104,409	2.34%
Computer Communications Equipment		
4,300 Cisco Systems, Inc.	209,195	4.68%
Electronic Computers		
2,200 Apple Inc.	496,628	11.12%
Radio & TV Broadcasting & Communications Equipment		
2,650 QUALCOMM Inc.	190,879	4.27%
Retail - Catalog & Mail-Order Houses		
40 Amazon.com, Inc. *	80,120	1.79%
Semiconductors and Related Devices		
690 Broadcom Inc.	170,244	
1,720 Skyworks Solutions Inc.	156,021	
2,300 Texas Instruments Inc.	246,767	
	573,032	12.83%
Services - Business Services, NEC		
1,200 Global Payments Inc	152,880	
2,600 PayPal Holdings, Inc. *	228,384	
	381,264	8.54%
Services - Computer Programming, Data Processing, Etc.		
200 Alphabet Inc. - Class A *	241,416	
200 Alphabet Inc. - Class C *	238,694	
770 Baidu, Inc. * **	176,084	
1,950 Facebook, Inc. - Class A *	320,697	
	976,891	21.88%
Services - Prepackaged Software		
580 Adobe Systems Incorporated *	156,571	
3,550 Microsoft Corporation	406,013	
2,200 Square, Inc. - Class A *	217,822	
	780,406	17.49%
Telephone Communications (No Radio Telephone)		
3,000 AT&T Inc.	100,740	
3,000 Verizon Communications Inc.	160,170	
	260,910	5.84%
Total for Common Stocks (Cost \$1,797,705)	4,053,734	90.78%
Real Estate Investment Trusts		
1,200 American Tower Corp.	174,360	
1,450 Crown Castle International Corp.	161,429	
Total for Real Estate Investment Trusts (Cost - \$263,711)	335,789	7.52%
Money Market Funds		
81,865 Invesco Short Term Investments Trust Government & Agency Portfolio Institutional Class 1.97% ***	81,865	1.83%
(Cost - \$81,865)		
Total Investments		
(Cost - \$2,143,281)		
	4,471,388	100.13%
Liabilities in Excess of Other Assets	(6,019)	-0.13%
Net Assets	\$ 4,465,369	100.00%

* Non-Income producing securities.

** ADR - American Depositary Receipt.

*** The rate shown represents the 7-day yield at September 30, 2018.

The accompanying notes are an integral part of the financial statements.

WIRELESS FUND

Statement of Assets and Liabilities (Unaudited) September 30, 2018

Assets:	
Investment Securities at Fair Value (Cost - \$2,143,281)	\$ 4,471,388
Receivables:	
Dividends	1,056
Total Assets	<u>4,472,444</u>
Liabilities:	
Payables:	
Management Fees	7,075
Total Liabilities	<u>7,075</u>
Net Assets	<u>\$ 4,465,369</u>
Net Assets Consist of:	
Paid In Capital	\$ 1,972,659
Accumulated Net Investment Income (Loss)	(15,299)
Accumulated Realized Gain (Loss) on Investments - Net	179,902
Unrealized Appreciation (Depreciation) in Value of Investments Based on Identified Cost - Net	2,328,107
Net Assets, for 370,843 Shares Outstanding	<u>\$ 4,465,369</u>
(Unlimited number of shares authorized without par value)	
Net Asset Value and Offering Price	
Per Share (\$4,465,369/370,843 shares)	\$ 12.04
Minimum Redemption Price Per Share * (\$12.04x0.98)	\$ 11.80

Statement of Operations (Unaudited)

For the six month period ended September 30, 2018

Investment Income:	
Dividends (Net of foreign withholding tax of \$0)	\$ 32,043
Total Investment Income	32,043
Expenses:	
Management Fees	41,389
Total Expenses	41,389
Net Investment Income (Loss)	(9,346)
Realized and Unrealized Gain (Loss) on Investments:	
Net Realized Gain (Loss) on Investments	87,498
Net Change in Unrealized Appreciation (Depreciation) on Investments	421,971
Net Realized and Unrealized Gain (Loss) on Investments	509,469
Net Increase (Decrease) in Net Assets from Operations	<u>\$ 500,123</u>

* Reflects a 2% redemption fee if shares are redeemed within 90 days of purchase.

The accompanying notes are an integral part of the financial statements.

WIRELESS FUND

Statements of Changes in Net Assets

	(Unaudited) 4/1/2018 to 9/30/2018	4/1/2017 to 3/31/2018
From Operations:		
Net Investment Income (Loss)	\$ (9,346)	\$ (11,156)
Net Realized Gain (Loss) on Investments	87,498	237,904
Net Change in Unrealized Appreciation (Depreciation)	421,971	337,894
Increase (Decrease) in Net Assets from Operations	500,123	564,642
From Distributions to Shareholders:		
Net Investment Income	-	-
Net Realized Gain from Security Transactions	-	-
Change in Net Assets from Distributions	-	-
From Capital Share Transactions:		
Proceeds From Sale of Shares	117,183	233,331
Proceeds From Redemption Fees (Note 2)	101	118
Shares Issued on Reinvestment of Dividends	-	-
Cost of Shares Redeemed	(180,131)	(552,611)
Net Increase (Decrease) from Shareholder Activity	(62,847)	(319,162)
 Net Increase (Decrease) in Net Assets	 437,276	 245,480
 Net Assets at Beginning of Period	 4,028,093	 3,782,613
Net Assets at End of Period (Including Accumulated Net Investment Income (Loss) of (\$15,299) and (\$5,953), respectively)	\$ 4,465,369	\$ 4,028,093
 Share Transactions:		
Issued	10,363	22,682
Reinvested	-	-
Redeemed	(16,013)	(53,321)
Net Increase (Decrease) in Shares	(5,650)	(30,639)
Shares Outstanding, Beginning of Period	376,493	407,132
Shares Outstanding, End of Period	370,843	376,493

Financial Highlights

	(Unaudited) 4/1/2018 to 9/30/2018	4/1/2017 to 3/31/2018	4/1/2016 to 3/31/2017	4/1/2015 to 3/31/2016	4/1/2014 to 3/31/2015	4/1/2013 to 3/31/2014
Selected data for a share outstanding throughout the period:						
Net Asset Value -						
Beginning of Period	\$ 10.70	\$ 9.29	\$ 7.98	\$ 8.01	\$ 6.87	\$ 5.86
Net Investment Income (Loss) ^(a)	(0.03)	(0.03)	(0.01)	(0.02)	(0.04)	0.24
Net Gains or Losses on Investments (realized and unrealized) ^(b)	1.37	1.44	1.32	(0.01)	1.39	0.78
Total from Investment Operations	1.34	1.41	1.31	(0.03)	1.35	1.02
Proceeds from Redemption Fees	-	-	-	-	0.01	-
Distributions (From Net Investment Income)	-	-	-	-	(0.22)	(0.01)
Distributions (From Realized Capital Gains)	-	-	-	-	-	-
Total Distributions	-	-	-	-	(0.22)	(0.01)
Net Asset Value -						
End of Period	\$ 12.04	\$ 10.70	\$ 9.29	\$ 7.98	\$ 8.01	\$ 6.87
Total Return ^(c)	12.52% **	15.18%	16.42%	(0.37)%	20.10%	17.42%
Ratios/Supplemental Data						
Net Assets - End of Period (Thousands)	\$ 4,465	\$ 4,028	\$ 3,783	\$ 3,679	\$ 3,768	\$ 3,014
Ratio of Expenses to Average Net Assets	1.95% ***	1.95%	1.95%	1.95%	1.95%	1.95%
Ratio of Net Investment Income (Loss) to Average Net Assets	-0.44% ***	-0.27%	-0.14%	-0.25%	-0.49%	3.71%
Portfolio Turnover Rate	14.34% **	0.13%	15.57%	4.40%	21.22%	28.75%

* Amounts were less than +/- \$0.005 per share.

** Not Annualized.

*** Annualized.

(a) Per share amounts calculated using average shares outstanding method.

(b) Realized and unrealized gains and losses per share in this caption are balancing amounts necessary to reconcile the change in net asset value per share for the period, and may not reconcile with the aggregate gains and losses in the Statement of Operations due to share transactions for the period.

(c) Total returns represent the rate that the investor would have earned or lost on an investment in the Fund assuming reinvestment of dividends. Total return calculation does not reflect redemption fee.

The accompanying notes are an integral part of the financial statements.

NOTES TO FINANCIAL STATEMENTS - WIRELESS FUND

September 30, 2018

(Unaudited)

1.) ORGANIZATION

Wireless Fund (the "Fund") is a non-diversified series of the PFS Funds (the "Trust"), an open-ended management investment company. Prior to March 5, 2010 the Trust was named Wireless Fund. The Trust was organized in Massachusetts as a business trust on January 13, 2000 and may offer shares of beneficial interest in a number of separate series, each series representing a distinct fund with its own investment objectives and policies. The Fund, under normal market conditions, invests at least 80% of its assets in the securities of companies engaged in the development, production, or distribution of wireless related products or services. As of September 30, 2018, there were seven series operating in the Trust. The Fund's primary investment objective is to seek long-term growth of capital.

2.) SIGNIFICANT ACCOUNTING POLICIES

The Fund is an investment company and accordingly follows the investment company accounting and reporting guidance of the Financial Accounting Standards Board ("FASB") Accounting Standards Codification Topic 946 *Financial Services - Investment Companies*. The financial statements are prepared in conformity with accounting principles generally accepted in the United States of America ("GAAP"). The Fund follows the significant accounting policies described in this section.

SECURITY VALUATION

All investments in securities are recorded at their estimated fair value, as described in Note 3.

SHARE VALUATION

The net asset value per share (the "NAV") is generally calculated as of the close of trading on the New York Stock Exchange (the "Exchange") (normally 4:00 p.m. Eastern time) every day the Exchange is open. The NAV is calculated by taking the total value of the Fund's assets, subtracting its liabilities, and then dividing by the total number of shares outstanding, rounded to the nearest cent. The offering price and redemption price per share is equal to the net asset value per share, except that shares of the Fund are subject to a redemption fee of 2% if redeemed within 90 days of purchase. During the six month period ended September 30, 2018, proceeds from redemption fees were \$101.

DISTRIBUTIONS TO SHAREHOLDERS

Distributions to shareholders, which are determined in accordance with income tax regulations, are recorded on the ex-dividend date. The treatment for financial reporting purposes of distributions made to shareholders during the year from net investment income or net realized capital gains may differ from their ultimate treatment for federal income tax purposes. These differences are caused primarily by differences in the timing of the recognition of certain components of income, expense, or realized capital gain for federal income tax purposes. Where such differences are permanent in nature, they are reclassified in the components of the net assets based on their ultimate characterization for federal income tax purposes. Any such reclassifications will have no effect on net assets, results of operations, or net asset values per share of the Fund.

FEDERAL INCOME TAXES

The Fund's policy is to continue to comply with the requirements of the Internal Revenue Code that are applicable to regulated investment companies and to distribute all of its taxable income to shareholders. Therefore, no federal income tax provision is required. It is the Fund's policy to distribute annually, prior to the end of the calendar year, dividends sufficient to satisfy excise tax requirements of the Internal Revenue Code. This Internal Revenue Code requirement may cause an excess of distributions over the book year-end accumulated income. In addition, it is the Fund's policy to distribute annually, after the end of the fiscal year, any remaining net investment income and net realized capital gains.

The Fund recognizes the tax benefits of certain tax positions only where the position is "more likely than not" to be sustained assuming examination by tax authorities. Management has analyzed the Fund's tax positions, and has concluded that no liability for unrecognized tax benefits should be recorded related to uncertain tax positions taken on returns filed for open tax years. The Fund identifies its major tax jurisdictions as U.S. Federal and State tax authorities; however the Fund is not aware of any tax positions for which it is reasonably possible that the total

Notes to Financial Statements (Unaudited) - continued

amounts of unrecognized tax benefits will change materially in the next twelve months. The Fund recognizes interest and penalties, if any, related to unrecognized tax benefits as income tax expense in the Statement of Operations. During the six month period ended September 30, 2018, the Fund did not incur any interest or penalties.

USE OF ESTIMATES

The financial statements are prepared in accordance with GAAP, which requires management to make estimates and assumptions that affect the reported amounts of assets and liabilities and disclosure of contingent assets and liabilities at the date of the financial statements and the reported amounts of increases and decreases in net assets from operations during the reporting period. Actual results could differ from those estimates.

OTHER

The Fund records security transactions based on a trade date. Dividend income is recognized on the ex-dividend date, and interest income, if any, is recognized on an accrual basis. The Fund uses the specific identification method in computing gain or loss on the sale of investment securities. Withholding taxes on foreign dividends have been provided for in accordance with the Fund's understanding of the applicable country's tax rules and rates.

The Fund may invest in real estate investment trusts ("REITs") that pay distributions to their shareholders based on available funds from operations. It is common for these distributions to exceed the REITs taxable earnings and profits resulting in the excess portion of such distribution to be designated as return of capital. Distributions received from REITs are generally recorded as dividend income and, if necessary, are reclassified annually in accordance with tax information provided by the underlying REITs.

EXPENSES

Expenses incurred by the Trust that do not relate to a specific fund of the Trust are allocated to the individual funds based on each fund's relative net assets or another appropriate basis.

3.) SECURITIES VALUATIONS

The Fund utilizes various methods to measure the fair value of most of its investments on a recurring basis. GAAP establishes a hierarchy that prioritizes inputs to valuation methods. The three levels of inputs are:

Level 1 - Unadjusted quoted prices in active markets for identical assets or liabilities that the Fund has the ability to access.

Level 2 - Observable inputs other than quoted prices in active markets included in level 1 that are observable for the asset or liability, either directly or indirectly. These inputs may include quoted prices for the identical instrument on an inactive market, prices for similar instruments, interest rates, prepayment speeds, credit risk, yield curves, default rates and similar data.

Level 3 - Unobservable inputs for the asset or liability, to the extent relevant observable inputs are not available, representing the Fund's own assumptions about the assumptions a market participant would use in valuing the asset or liability, and would be based on the best information available.

The availability of observable inputs can vary from security to security and is affected by a wide variety of factors, including, for example, the type of security, whether the security is new and not yet established in the marketplace, the liquidity of markets, and other characteristics particular to the security. To the extent that valuation is based on models or inputs that are less observable or unobservable in the market, the determination of fair value requires more judgment. Accordingly, the degree of judgment exercised in determining fair value is greatest for instruments categorized in level 3.

The inputs used to measure fair value may fall into different levels of the fair value hierarchy. In such cases, for disclosure purposes, the level in the fair value hierarchy within which the fair value measurement falls in its entirety, is determined based on the lowest level input that is significant to the fair value measurement in its entirety.

FAIR VALUE MEASUREMENTS

A description of the valuation techniques applied to the Fund's major categories of assets measured at fair value on a recurring basis follows.

Notes to Financial Statements (Unaudited) - continued

Equity securities (common stocks, including ADRs and real estate investment trusts). Equity securities generally are valued by using market quotations, but may be valued on the basis of prices furnished by a pricing service when the Adviser believes such prices accurately reflect the fair value of such securities. Securities that are traded on any stock exchange or on the NASDAQ over-the-counter market are generally valued by the pricing service at the last quoted sale price. Lacking a last sale price, an equity security is generally valued by the pricing service at its last bid price. Generally, if the security is traded in an active market and is valued at the last sale price, the security is categorized as a level 1 security. When market quotations are not readily available, when the Adviser determines that the market quotation or the price provided by the pricing service does not accurately reflect the current fair value, or when restricted securities are being valued, such securities are valued as determined in good faith by the Adviser, subject to review of the Board of Trustees (the "Trustees" or the "Board") and are categorized in level 2 or level 3, when appropriate.

Money market funds. Shares of money market funds are valued at net asset value and are classified in level 1 of the fair value hierarchy.

In accordance with the Trust's good faith pricing guidelines, the Adviser is required to consider all appropriate factors relevant to the value of securities for which it has determined other pricing sources are not available or reliable as described above. There is no standard method for determining fair value, since fair value depends upon the circumstances of each individual case. As a general principle, the current fair value of an issue of securities being valued by the Adviser would appear to be the amount which the owner might reasonably expect to receive for them upon their current sale. Methods which are in accordance with this principle may, for example, be based on (i) a multiple of earnings; (ii) a discount from market of a similar freely traded security (including a derivative security or a basket of securities traded on other markets, exchanges or among dealers); or (iii) yield to maturity with respect to debt issues, or a combination of these and other methods.

The following table summarizes the inputs used to value the Fund's assets measured at fair value as of September 30, 2018:

<u>Valuation Inputs of Assets</u>	<u>Level 1</u>	<u>Level 2</u>	<u>Level 3</u>	<u>Total</u>
Common Stocks, including ADRs	\$4,053,734	\$0	\$0	\$4,053,734
Real Estate Investment Trusts	335,789	0	0	335,789
Money Market Funds	<u>81,865</u>	<u>0</u>	<u>0</u>	<u>81,865</u>
Total	\$4,471,388	\$0	\$0	\$4,471,388

Refer to the Fund's Schedule of Investments for a listing of securities by industry. The Fund did not hold any level 3 assets during the six month period ended September 30, 2018. There were no transfers into or out of the levels during the six month period ended September 30, 2018. It is the Fund's policy to consider transfers into or out of the levels as of the end of the reporting period.

The Fund did not invest in any derivative instruments during the six month period ended September 30, 2018.

4.) INVESTMENT ADVISORY AGREEMENT

Value Trend Capital Management, LP (the "Adviser"), manages the investment portfolio of the Fund, subject to policies adopted by the Trust's Trustees. Under the Management Agreement, the Adviser, at its own expense and without reimbursement from the Trust, furnishes office space and all necessary office facilities, equipment and executive personnel necessary for managing the Fund. The Adviser also pays the salaries and fees of all officers and trustees of the Trust who are also officers, partners, or employees of the Adviser. The Adviser pays all operating expenses of the Fund, with the exception of taxes, borrowing expenses (such as (a) interest and (b) dividend expenses on securities sold short), brokerage commissions and extraordinary expenses and any indirect expenses, such as expenses incurred by other investment companies in which the Fund invests. For its services, the Adviser receives a fee of 1.95% per year of the average daily net assets of the Fund. As a result of the above calculation, for the six month period ended September 30, 2018, the Adviser received management fees totaling \$41,389. At September 30, 2018, the Fund owed \$7,075 to the Adviser.

Notes to Financial Statements (Unaudited) - continued

5.) RELATED PARTY TRANSACTIONS

Jeffrey R. Provence, of Premier Fund Solutions, Inc. (the "Administrator") also serves as trustee/officer of the Fund. Also, control persons of Value Trend Capital Management, LP serve as a trustee and officers of the Trust. These individuals receive benefits from the Adviser resulting from management fees paid to the Adviser of the Fund.

For the six month period ended September 30, 2018, the Trustees who are not interested persons of the Fund received Trustees' fees of \$750 each, for a total of \$2,250, plus travel expenses from the Adviser of the Fund. Under the Management Agreement, the Adviser pays these fees.

6.) PURCHASES AND SALES OF SECURITIES

For the six month period ended September 30, 2018, purchases and sales of investment securities other than U.S. Government obligations and short-term investments aggregated \$591,118 and \$588,751, respectively. Purchases and sales of U.S. Government obligations aggregated \$0 and \$0, respectively.

7.) TAX MATTERS

For federal income tax purposes, the cost of investments owned at September 30, 2018 was \$2,143,281. At September 30, 2018, the composition of unrealized appreciation (the excess of value over tax cost) and depreciation (the excess of tax cost over value) on a tax basis was as follows:

<u>Appreciation</u>	<u>(Depreciation)</u>	<u>Net Appreciation (Depreciation)</u>
\$2,344,217	(\$16,110)	\$2,328,107

The tax character of distributions was as follows:

	<u>Six months ended September 30, 2018</u>	<u>Year ended March 31, 2018</u>
Ordinary Income:	\$ 0	\$ 0
Long-term Capital Gain:	<u>0</u>	<u>0</u>
	\$ 0	\$ 0

8.) SUBSEQUENT EVENTS

Subsequent events after the date of the Statement of Assets and Liabilities have been evaluated through the date the financial statements were issued. Management has concluded that there is no impact requiring adjustment or disclosure in the financial statements.

Investment Adviser

Value Trend Capital Management, LP
1939 Friendship Drive, Suite C
El Cajon, CA 92020

**Dividend Paying Agent,
Shareholders' Servicing Agent,
Transfer Agent**

Mutual Shareholder Services, LLC
8000 Town Centre Dr., Suite 400
Broadview Heights, OH 44147

Distributor

Rafferty Capital Markets, LLC
1010 Franklin Avenue - 3rd Floor
Garden City, NY 11530

Custodian

U.S. Bank, NA
425 Walnut Street
P.O. Box 1118
Cincinnati, OH 45201

Independent Registered Public Accounting Firm

Cohen & Company, Ltd.
1350 Euclid Avenue, Suite 800
Cleveland, OH 44115

This report is provided for the general information of the shareholders of the Wireless Fund. This report is not intended for distribution to prospective investors in the funds, unless preceded or accompanied by an effective prospectus.